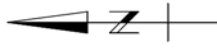


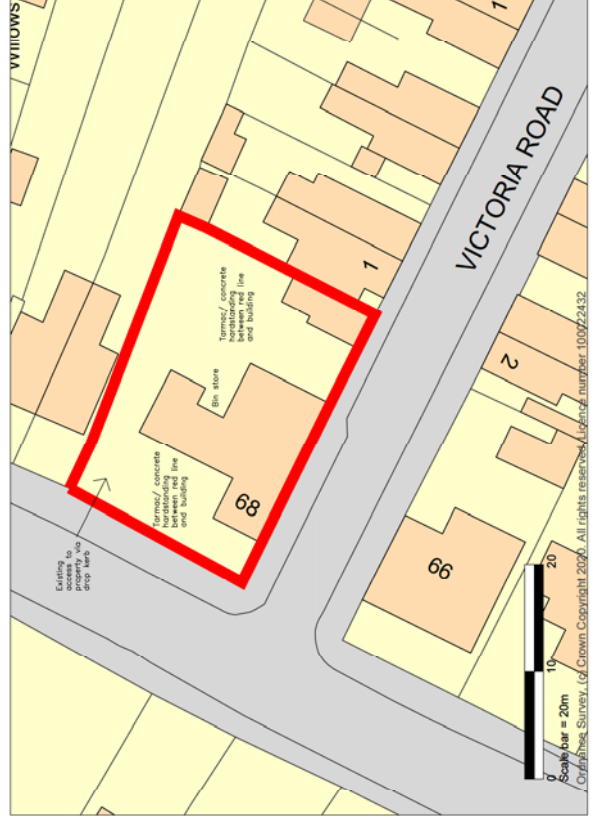
© Alan Wade Site Engineering Ltd.

- Notes:
1. This drawing should only be used for its intended purpose.
 2. Dimensions in metres unless otherwise stated.
 3. Details provided by Land and Mineral Management.

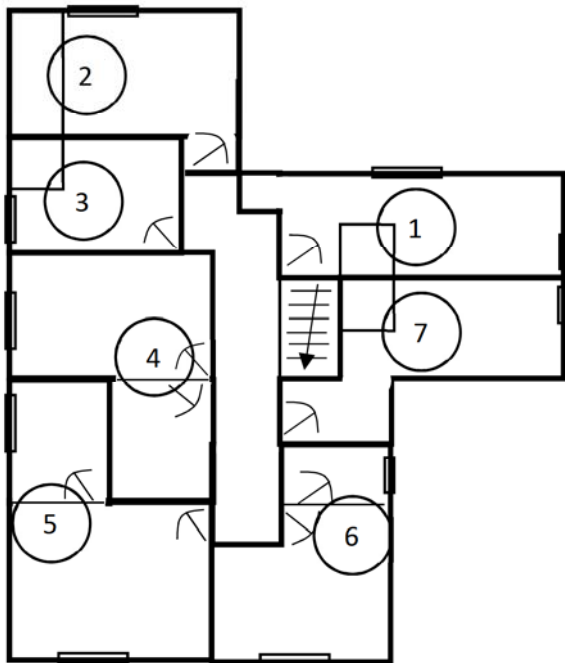
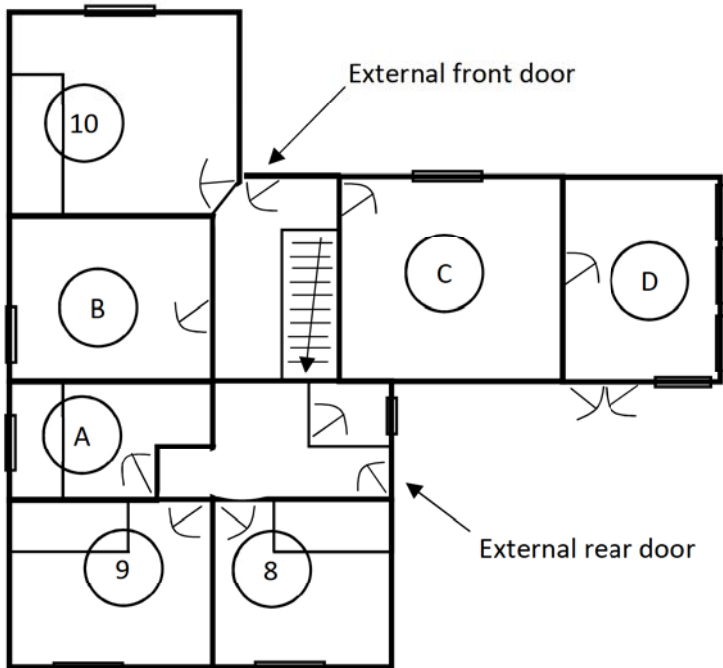
Application boundary



Revision	Comment	Date
	ALAN WADE SITE ENGINEERING LIMITED	
	LAND SURVEY AND QUANTITIES CALCULATIONS FOR BATHROOMS OPERATIONS SUIVWYS@BWSPEL.CO.UK	
	PROJECT CHANGE OF USE 68 TEMKESBURY ROAD LONGFORD, GLOUCESTER	
	CLIENT COMPLETE UTILITIES	
	DRAWING TITLE LOCATION PLAN AND BLOCK PLAN	
	DRAWN DATE 05/10/20	SURVEYED DATE -
	SCALE 1:1250 & 1:500	(AT A3)
	DRAWING NUMBER LMM/045/01	REV -



69 Tewkesbury Road, Gloucester. GL2 9EH: Floorplan.



Ground floor:

- A: Office + WC (2.4m x 4.2m)
- B: Kitchen (3.5m x 4.2m)
- C: Dining Room (4.3m x 4.5m)
- D: Living Room (4.5m x 3.1m)
- 8: Bedroom + WC* (2.5m x 3.5)
- 9: Bedroom + WC* (3.5m x 4.2)
- 10: Bedroom + WC* (4.3m x 4.4m)

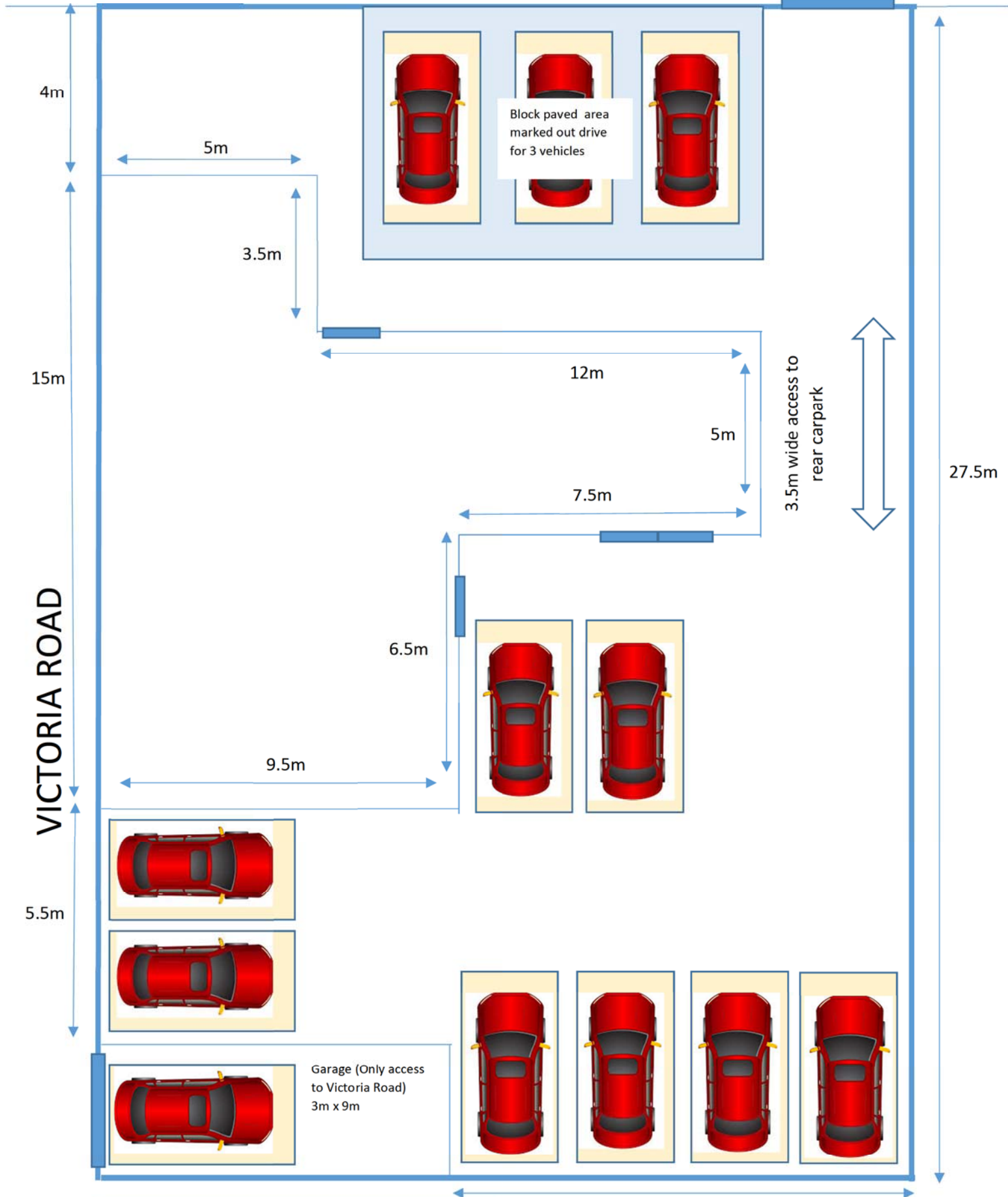
First floor:

- 1: Bedroom + WC* (2.2m x 5m)
- 2: Bedroom + WC* (3.1m x 2.8m)
- 3: Bedroom + WC* (2.4m x 4.2m)
- 4: Bedroom + WC* (3.6m x 4.5m)
- 5: Bedroom + WC* (3m x 4m)
- 6: Bedroom + WC* (3m x 3.65m)
- 7: Bedroom + WC* (2.3m x 4.2m)

*Note: All ten bedrooms include toilet, basin & shower with extraction fan. Ground floor office with only toilet, basin & extractor but no shower.

TEWKESBURY ROAD

Drop-kerb



SCALE - 1:1250



1 2 3 4 5 6 7 8 9 10m