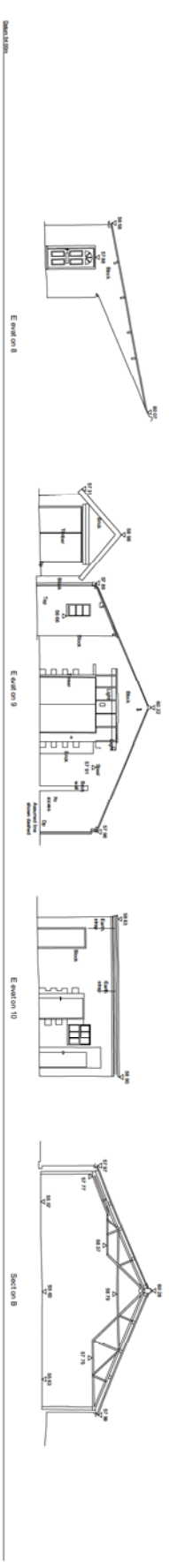
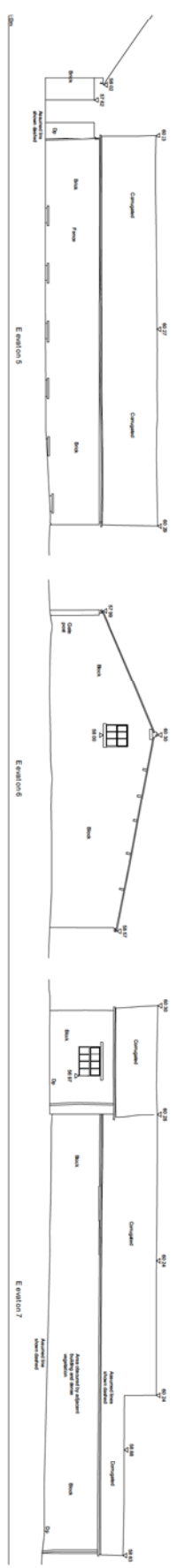




01 Existing Garage Floor Plan

1:100 @ A1



02 Existing Garage Elevations

1:100 @ A1

1. Do not scale drawings to fit page.
2. The drawing is to be used in conjunction with the relevant Building Regulations.
3. The drawing is to be used in conjunction with the relevant Building Regulations.
4. The drawing is to be used in conjunction with the relevant Building Regulations.
5. The drawing is to be used in conjunction with the relevant Building Regulations.
6. The drawing is to be used in conjunction with the relevant Building Regulations.
7. The drawing is to be used in conjunction with the relevant Building Regulations.
8. The drawing is to be used in conjunction with the relevant Building Regulations.
9. The drawing is to be used in conjunction with the relevant Building Regulations.
10. The drawing is to be used in conjunction with the relevant Building Regulations.



Rev	Rev's on	Date	Check	Rev
Rev's on	Design			

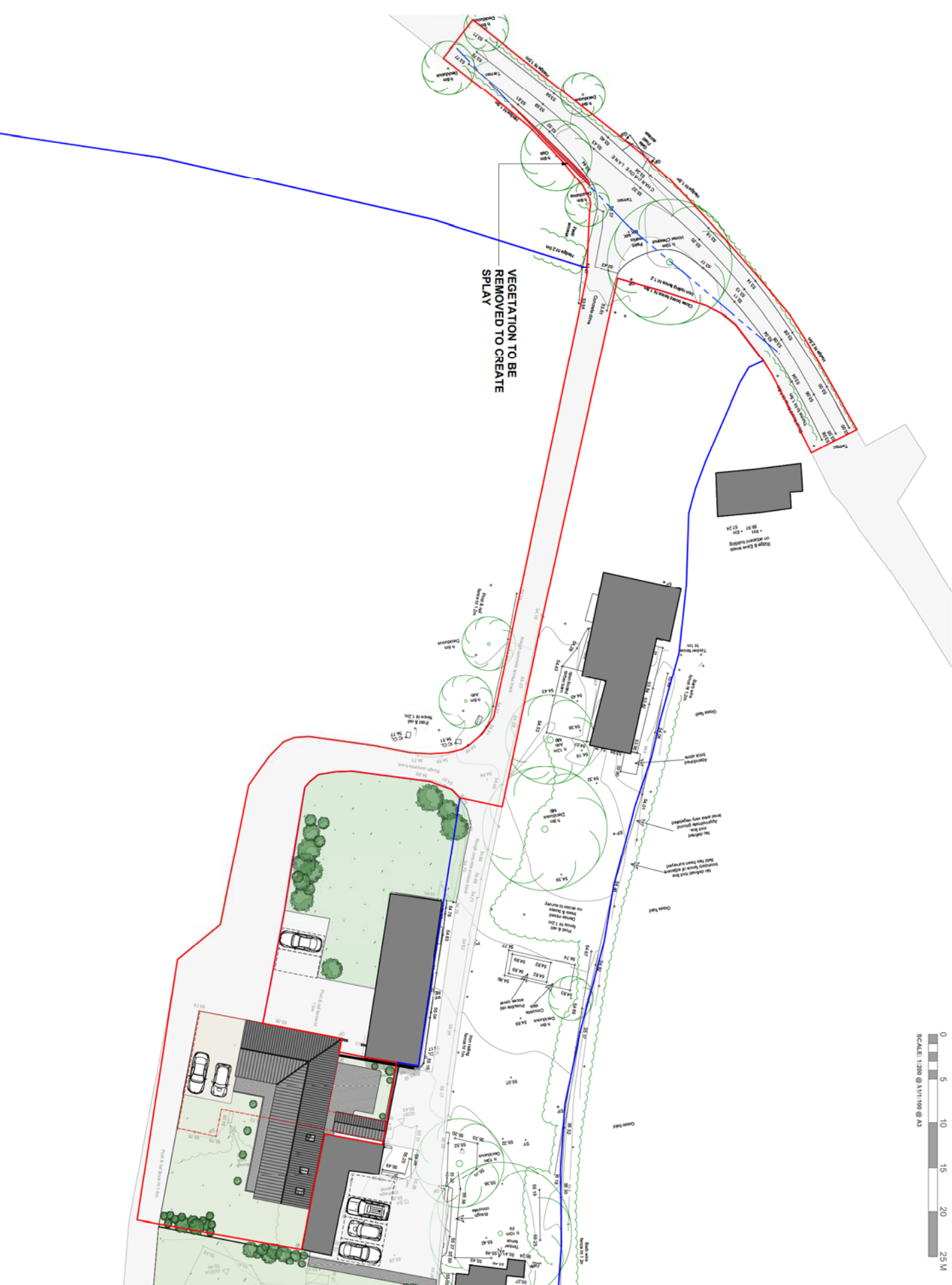


RPA Architects Ltd.
RPA Architects Ltd.
RPA Architects Ltd.
RPA Architects Ltd.
RPA Architects Ltd.
RPA Architects Ltd.
RPA Architects Ltd.
RPA Architects Ltd.
RPA Architects Ltd.
RPA Architects Ltd.

Location: 1000 1000 1000
Project: 1000 1000 1000
Drawing Title: 1000 1000 1000
Drawing Title: 1000 1000 1000
Drawing Title: 1000 1000 1000
Drawing Title: 1000 1000 1000
Drawing Title: 1000 1000 1000
Drawing Title: 1000 1000 1000
Drawing Title: 1000 1000 1000
Drawing Title: 1000 1000 1000
Drawing Title: 1000 1000 1000

Project: 1000 1000 1000
Drawing Title: 1000 1000 1000
Drawing Title: 1000 1000 1000
Drawing Title: 1000 1000 1000
Drawing Title: 1000 1000 1000
Drawing Title: 1000 1000 1000
Drawing Title: 1000 1000 1000
Drawing Title: 1000 1000 1000
Drawing Title: 1000 1000 1000
Drawing Title: 1000 1000 1000
Drawing Title: 1000 1000 1000

Project		Brickhouse Farm	
Chargeable Name		Shurdington	
Cheltenham			
Drawing Title		Existing Garage Plan & Elevations	
Status			
Local Authority	Date	Jan 2018	
Rev #	Date of Number		
1/2008A3	2206 PM 102		
	Rev's on		



1. Do not scale a section to a drawing
2. The drawing is a plan view and should not be used to determine the exact location of any building or structure
3. The drawing is a plan view and should not be used to determine the exact location of any building or structure
4. The drawing is a plan view and should not be used to determine the exact location of any building or structure
5. The drawing is a plan view and should not be used to determine the exact location of any building or structure



PROPERTY BOUNDARY

SITE BOUNDARY

EXISTING FOOTPRINT

EXISTING FOOTPRINT: 197 SQ.M

PROPOSED:

157 SQ.M
+ STUDY: 11 SQ.M

Approved Site Boundary Line	06.12.19	NP	C
Approved to reduce width of gable	07.08.19	NP	B
Comments			
Amendments made in line with	17.08.19	LM	A
Case Officers comments			
Drawn by	Date	Check	Rev

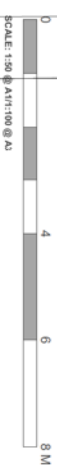


RPA Architects Ltd
The Old Rectory
101 Kingsway
London E1 1AA
T 01753 454 230
F 01753 454 230
www.rpaarchitects.com

Project
Brickhouse Farm, Shurdington

Drawing Title
Proposed Site Plan - Revised

Status	Date	Drawn by	Checked by
Local Authority	December 2019	SLB	
Site #	Drawn by Number	Rev #	
1500KA/111000KA	2306 P20 001	C	



1



EXISTING FOOTPRINT

EXISTING FOOTPRINT: 197 SQ M

PROPOSED:

128.32 SQM
+ STUDY 11 SQM

Review on Description	Date	Check	File
-----------------------	------	-------	------

RRA Architects Ltd

The Workshop
Will Show

© 2012 Cengage Learning. All Rights Reserved. May not be copied, scanned, or duplicated, in whole or in part. WCN 02-200-203

T 01432 278 707

E info@arrchitects.com

www.raarchitects.com

London

Harford

1 01 1000 2
1 02 000 1 30 0000

Lud ow Sreawbu

T 01564 519 747 T 01743 4

1

10

Project

Brickhouse Farm, Shu

Drawing Title

Proposed FICOR Plan -

Status	Date
--------	------

Local Authority	Movement
-----------------	----------

Scale	Drawing
-------	---------

1:500 A1/ 1:1000 A3 | 2.396 P

PLEASE NOTE NO MANHOLES WERE LIFTED THROUGH SURVEYING THE PROPERTY. CONTRACTOR IS REQUIRED TO INSPECT DRAINAGE SYSTEM TO CHECK THEY WORK PRIOR TO COMMENCEMENT



- 1 Do not use this drawing.
- 2 Any discrepancies to be referred to the Architect.
- 3 This drawing is to be used in conjunction with all relevant Specifications and other drawings issued by the Architect, Structural Engineer and other Consultants or Specialists.
- 4 This drawing is copyright and is not to be reproduced in part or whole without prior written permission of TIBA Architects Ltd.

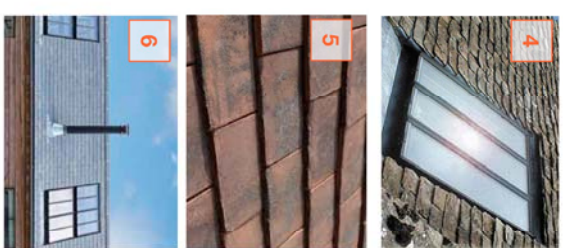


RRA Architects Ltd

Proposed Elevations - Revised

Status	Date	Drawn By
Local Authority	November 2019	SJB
Scale	Drawing Number	Revision
1:500 A1/1:100 B3	2396 P12/201	B

PLEASE NOTE NO MANHOLES WERE LIFTED THROUGH SURVEYING THE PROPERTY. CONTRACTOR IS REQUIRED TO INSPECT DRAINAGE SYSTEM TO CHECK THEY WORK PRIOR TO COMMENCEMENT



- 1 RECLAIMED BRICK TO MATCH THE OLD DARY BUILDING ADJACENT AND THE FARMHOUSE
- 2 DEVELOPE BRICK DETAIL TO INCORPORATE TRADITIONAL CRAFTSMANSHIP
- 3 TIMBER CASSETT WINDOWS AND A SOLID COURSE OF BRICKS
- 4 CONSERVATION FOOTLIGHTS FROM THE FOOTLIGHT COMPANY OR PRICED AND SUPPLEMENTED TO RETAIN THE CHARACTER OF THE BUILDING.
- 5 HANDMADE CLAY ROOF TILES TO MATCH THE SURROUNDING BUILDINGS WITHIN THE FARMLAND
- 6 STAINLESS STEEL CHIMNEY FLUE WITH COAL AND DAMPENER TO MATCH THE ODERFARNS
- 7 TIMBER BARN STYLE DOOR WITH GLAZED PANELS
- 8 GLAZED WINDOW WITH TIMBER SHUTTER TO MATCH THE OLD DARY.
- 9 DOUBLE TIMBER BARN STYLE DOORS WITH GLAZED PANELS AND SOLID COURSE OF BRICKS

Revision Description	Date	Check	By
Amend to reduce width of gable in line with Conservation Officers comments	07.09.19	MP	B
Amendments made in line with Case Officers comments	17.09.19	LM	A



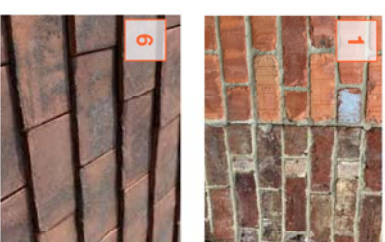
www.itaaichitects.com

E 01 432 278 707 info@itaaichitects.com	L London T 0203 326 0286	H Hastings T 01 322 279 707	G Gloucestershire T 01 242 280 274
	L Luton T 01584 519 247	G Greenbury T 01743 424 280	

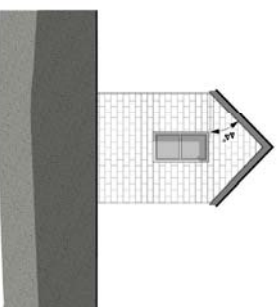
003 Proposed South Elevation
1:508(A) 1:1008(A)

PLEASE REFER TO STRUCTURAL ENGINEERS SPECIFICATION

TO CHECK THEY WORK PRIOR TO COMMENCEMENT



004 Proposed South Elevation
1:5006A1 1:1009A3



Proposed East Elevation
1:50 (A1 1:10 (B1))
003

rrs architects

RRS Architects Ltd
1000 West Beaver Creek Road
Richmond Hill, Ontario L4B 1N2

T 905.462.2778
F 905.462.2778
E info@rrsarchitects.com
www.rrsarchitects.com

General Manager
T 905.462.2778
F 905.462.2778

Architectural Designer
T 905.462.2778
F 905.462.2778

Interior Designer
T 905.462.2778
F 905.462.2778

Project Manager
T 905.462.2778
F 905.462.2778

Business Development
T 905.462.2778
F 905.462.2778

Office Manager
T 905.462.2778
F 905.462.2778

Human Resources
T 905.462.2778
F 905.462.2778

Finance
T 905.462.2778
F 905.462.2778

Legal
T 905.462.2778
F 905.462.2778

Marketing
T 905.462.2778
F 905.462.2778

Operations
T 905.462.2778
F 905.462.2778

IT
T 905.462.2778
F 905.462.2778

Facilities
T 905.462.2778
F 905.462.2778

Security
T 905.462.2778
F 905.462.2778

Compliance
T 905.462.2778
F 905.462.2778

Quality Assurance
T 905.462.2778
F 905.462.2778

Environmental
T 905.462.2778
F 905.462.2778

Health and Safety
T 905.462.2778
F 905.462.2778

Insurance
T 905.462.2778
F 905.462.2778

Tax
T 905.462.2778
F 905.462.2778

Accounting
T 905.462.2778
F 905.462.2778

Payroll
T 905.462.2778
F 905.462.2778

Benefits
T 905.462.2778
F 905.462.2778

Training
T 905.462.2778
F 905.462.2778

Recruitment
T 905.462.2778
F 905.462.2778

Consulting
T 905.462.2778
F 905.462.2778

Research
T 905.462.2778
F 905.462.2778

Development
T 905.462.2778
F 905.462.2778

Testing
T 905.462.2778
F 905.462.2778

Deployment
T 905.462.2778
F 905.462.2778

Support
T 905.462.2778
F 905.462.2778

Documentation
T 905.462.2778
F 905.462.2778

Compliance
T 905.462.2778
F 905.462.2778

Quality Assurance
T 905.462.2778
F 905.462.2778

Environmental
T 905.462.2778
F 905.462.2778

Health and Safety
T 905.462.2778
F 905.462.2778

Insurance
T 905.462.2778
F 905.462.2778

Tax
T 905.462.2778
F 905.462.2778

Accounting
T 905.462.2778
F 905.462.2778

Payroll
T 905.462.2778
F 905.462.2778

Benefits
T 905.462.2778
F 905.462.2778

Training
T 905.462.2778
F 905.462.2778

Recruitment
T 905.462.2778
F 905.462.2778

Consulting
T 905.462.2778
F 905.462.2778

Research
T 905.462.2778
F 905.462.2778

Development
T 905.462.2778
F 905.462.2778

Testing
T 905.462.2778
F 905.462.2778

Deployment
T 905.462.2778
F 905.462.2778

Support
T 905.462.2778
F 905.462.2778

Documentation
T 905.462.2778
F 905.462.2778

Compliance
T 905.462.2778
F 905.462.2778

Quality Assurance
T 905.462.2778
F 905.462.2778

Environmental
T 905.462.2778
F 905.462.2778

Health and Safety
T 905.462.2778
F 905.462.2778

Insurance
T 905.462.2778
F 905.462.2778

Tax
T 905.462.2778
F 905.462.2778

Accounting
T 905.462.2778
F 905.462.2778

Payroll
T 905.462.2778
F 905.462.2778

Benefits
T 905.462.2778
F 905.462.2778

Training
T 905.462.2778
F 905.462.2778

Recruitment
T 905.462.2778
F 905.462.2778

Consulting
T 905.462.2778
F 905.462.2778

Research
T 905.462.2778
F 905.462.2778

Development
T 905.462.2778
F 905.462.2778

Testing
T 905.462.2778
F 905.462.2778

Deployment
T 905.462.2778
F 905.462.2778

Support
T 905.462.2778
F 905.462.2778

Documentation
T 905.462.2778
F 905.462.2778

Compliance
T 905.462.2778
F 905.462.2778

Quality Assurance
T 905.462.2778
F 905.462.2778

Environmental
T 905.462.2778
F 905.462.2778

Health and Safety
T 905.462.2778
F 905.462.2778

Insurance
T 905.462.2778
F 905.462.2778

Tax
T 905.462.2778
F 905.462.2778

Accounting
T 905.462.2778
F 905.462.2778

Payroll
T 905.462.2778
F 905.462.2778

Benefits
T 905.462.2778
F 905.462.2778

Training
T 905.462.2778
F 905.462.2778

Recruitment
T 905.462.2778
F 905.462.2778

Consulting
T 905.462.2778
F 905.462.2778

Research
T 905.462.2778
F 905.462.2778

Development
T 905.462.2778
F 905.462.2778

Testing
T 905.462.2778
F 905.462.2778

Deployment
T 905.462.2778
F 905.462.2778

Support
T 905.462.2778
F 905.462.2778

Documentation
T 905.462.2778
F 905.462.2778

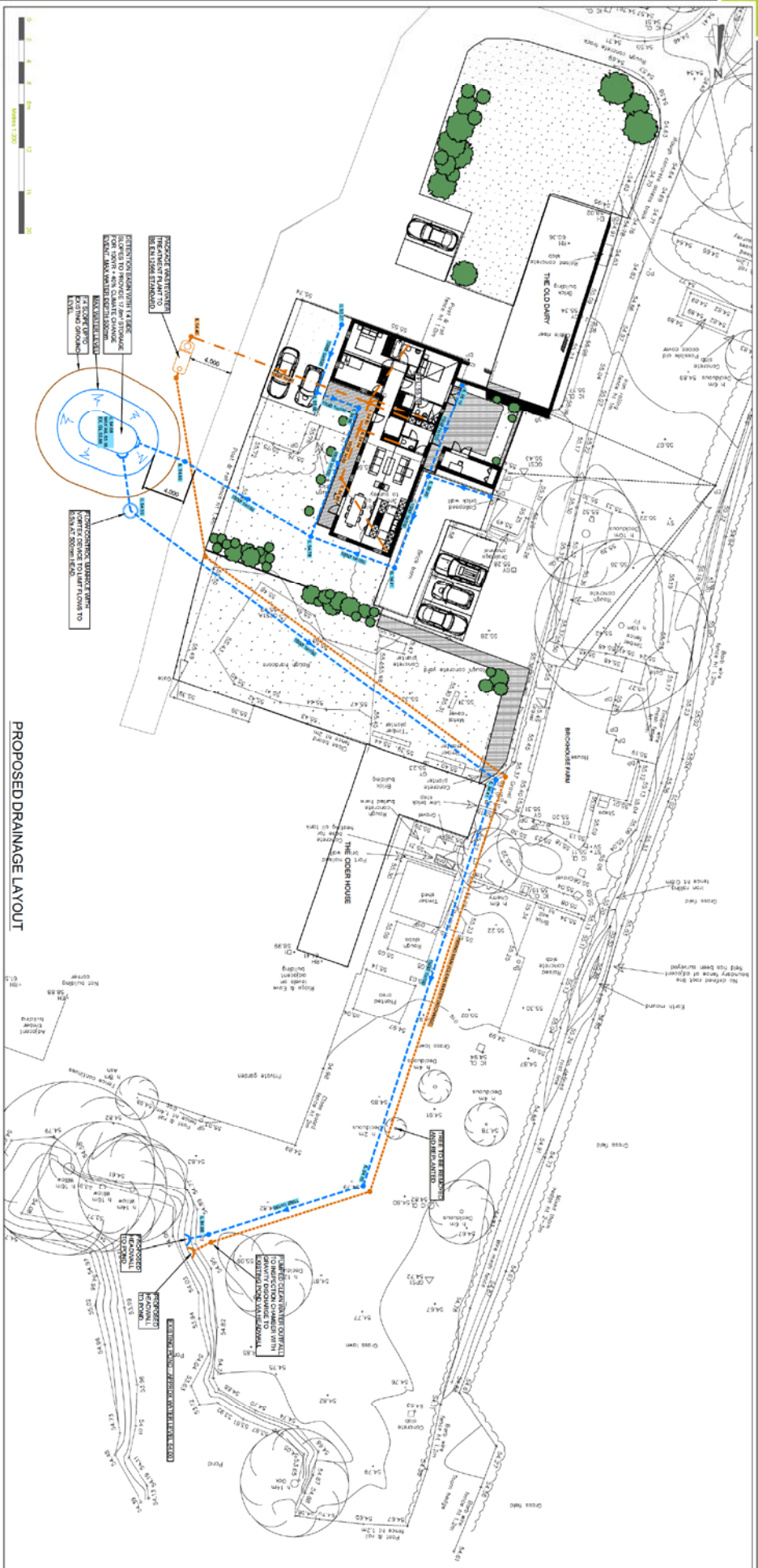
Compliance
T 905.462.2778
F 905.462.2778

Quality Assurance
T 905.462.2778
F 905.462.2778

Environmental
T 905.462.2778
F 905.462.2778

Health and Safety
T 905.462.2778
F 905.462.2778

Insurance
T 905.462.2778
F 905.462.2778</



PROPOSED DRAINAGE LAYOUT



CATCHMENT PLAN