

Revision reference		By	For comment / Red line	Date
Initial issue				
Date of issue				
Date of last other revision				
01	13.07.17	TS	Initial issue	13/07/17
02	13.07.17	TS	Initial issue	13/07/17
03	13.07.17	TS	Initial issue	13/07/17
04	13.07.17	TS	Initial issue	13/07/17
05	13.07.17	TS	Initial issue	13/07/17
06	13.07.17	TS	Initial issue	13/07/17
07	13.07.17	TS	Initial issue	13/07/17
08	13.07.17	TS	Initial issue	13/07/17
09	13.07.17	TS	Initial issue	13/07/17
10	13.07.17	TS	Initial issue	13/07/17
11	13.07.17	TS	Initial issue	13/07/17
12	13.07.17	TS	Initial issue	13/07/17
13	13.07.17	TS	Initial issue	13/07/17
14	13.07.17	TS	Initial issue	13/07/17
15	13.07.17	TS	Initial issue	13/07/17
16	13.07.17	TS	Initial issue	13/07/17
17	13.07.17	TS	Initial issue	13/07/17
18	13.07.17	TS	Initial issue	13/07/17
19	13.07.17	TS	Initial issue	13/07/17
20	13.07.17	TS	Initial issue	13/07/17

Ref.	Date	By (Ref)	For comment / Red line	Description
A.	02/06/17	TS	TS	As proposed amendments, such with modification, to be reviewed for the approval of relevant planning authorities, to be reviewed for the approval of relevant planning authorities, to be reviewed for the approval of relevant planning authorities.
B.	13/06/17	TS	TS	Extension and porch shown in block plan
C.	27/06/17	TS	TS	Doors & window function called
D.	03/07/17	TS	TS	Doors, Porch & full downstairs layout amendments
E.	14/07/17	TS	TS	Finalised & submitted
F.	14/07/17	TS	TS	Finalised & submitted
G.	04/07/17	TS	TS	Designing updated to show a full

Designer Risk Assessment - Priority level of risk indicated by RAG (Red/Amber/Green)

Ref.	Date	By (Ref)	Description
			Box details

Project:
EXTENSIONS & ALTERATIONS
NO.5 DOUGHMEADOW COTTAGES
LAVERTON, GLOS.

Drawing Title:
GENERAL ARRANGEMENTS



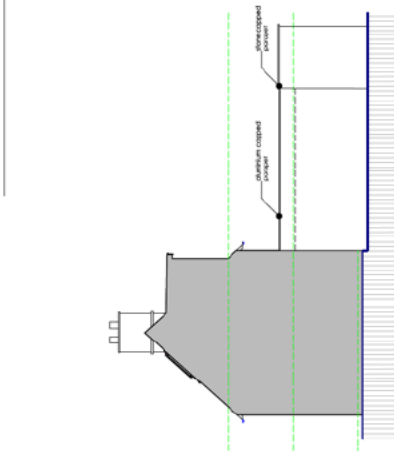
Architecture Ltd.
RIBA Chartered Practice
 Architects & Historic Building Consultants
 Tel: 0845 680 2215 | Email: info@arbarchitectures.com
 www.arbarchitectures.com

**Fulbore Mill | Childwickham Rd
 Broadway | Wores | WR12 7HB**
 www.arbarchitecture.com

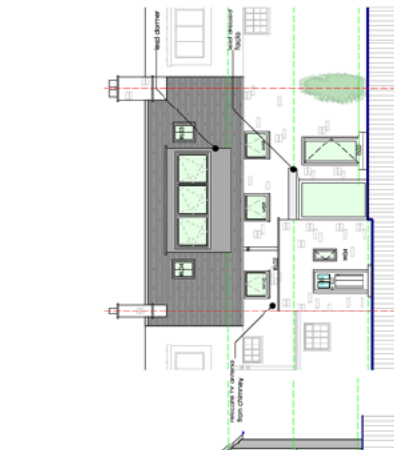
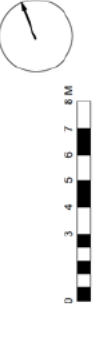
Office at: Quayside | Victoria Quay | Solihole | 108 BCU

Scale @ A1	Date	Project No.	Drawn:	Rev:
1:100	13/07/17	ARB-128-2017	128508	G

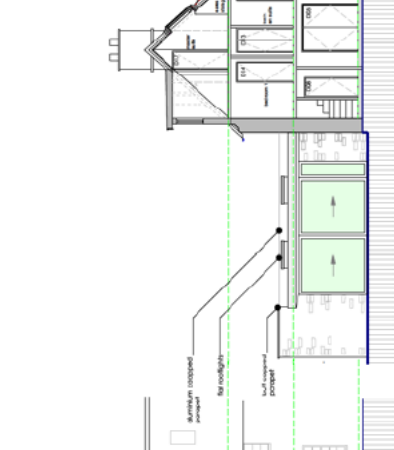
drawing & contents copyright ARB Architecture



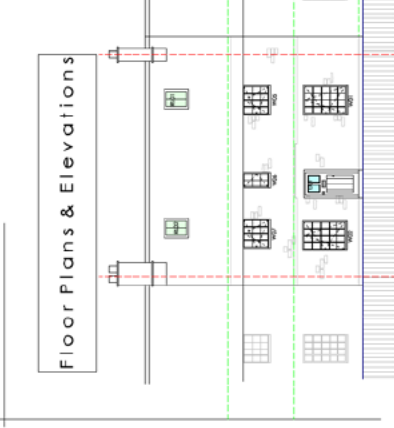
Side Elevation/Section
Scale 1:100 @A1



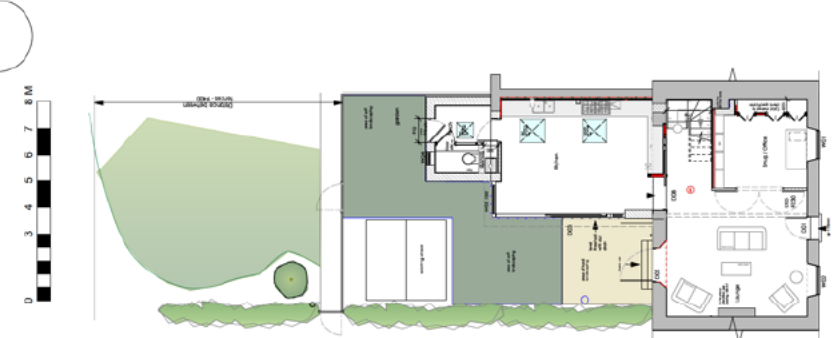
Rear Elevation
Scale 1:100 @A1



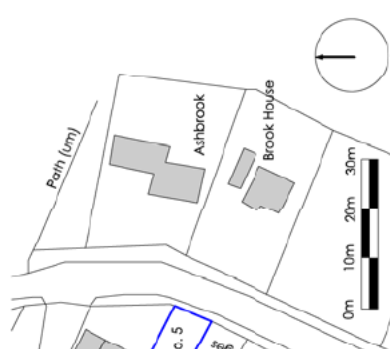
Side Elevation/Section
Scale 1:100 @A1



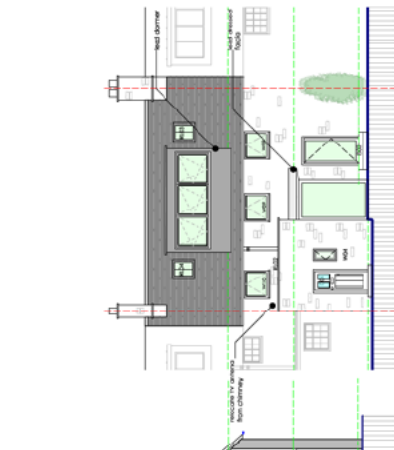
Front Elevation
Scale 1:100 @A1



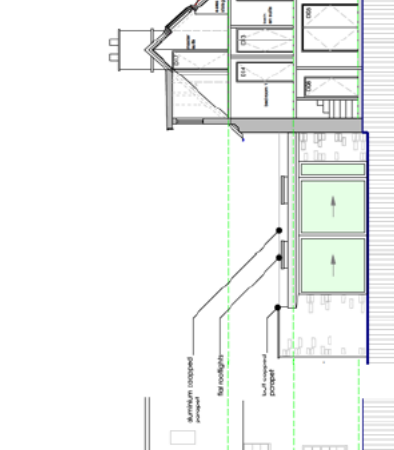
Ground Floor Plan
Scale 1:100 @A1



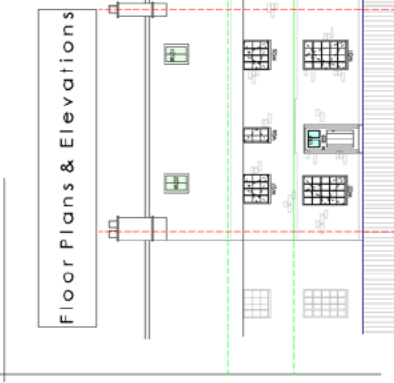
Block Plan
Scale 1:500 @A1



Loft Plan
Scale 1:100 @A1



Roof Plan
Scale 1:100 @A1



First Floor Plan
Scale 1:100 @A1



DRAWING STATUS 1 - PLANNING

THIS PRACTICE IS AUTHORISED AND REGULATED BY THE ROYAL INSTITUTE OF BRITISH ARCHITECTS (R.I.B.A. Reg. No. 2000795)
 PRACTICE PRINCIPAL - A. K. BOLT R.I.B.A. - A&A Reg. No. 034583 | R.I.B.A. Reg. No. 1164238

ARB
 Architects Registration Board

RIBA
 Chartered Practice

GENERAL NOTE:
 CONTRACTOR TO VERIFY ALL DIMENSIONS AND LEVELS ON SITE. ALL DIMENSIONS SHOWN ON THIS DRAWING ARE TO FACE UNLESS OTHERWISE STATED. ALL DIMENSIONS SHOWN ARE TO INSIDE UNLESS OTHERWISE STATED.